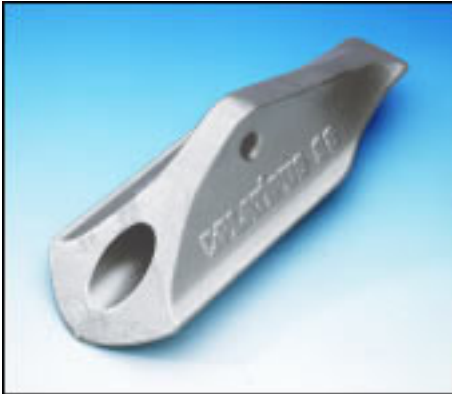


# THE CONCEPT



The percussion driven mechanical tree anchor was originally developed in 1983 as a unique, modern and versatile device that could be rapidly deployed in most displaceable ground conditions.

The original design provided a lightweight corrosion resistant tree anchor that did not disturb the soil during installation. It could be driven from ground level using conventional portable equipment, could be pulled to an exact holding capacity and fully operational immediately.

