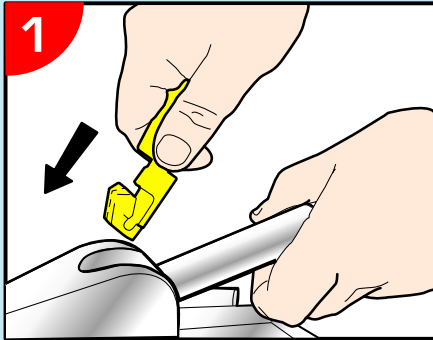
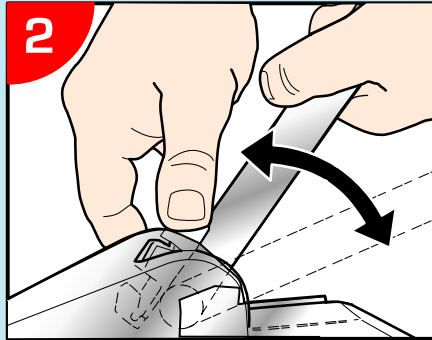


# T-FITTING ASSEMBLY INSTRUCTIONS

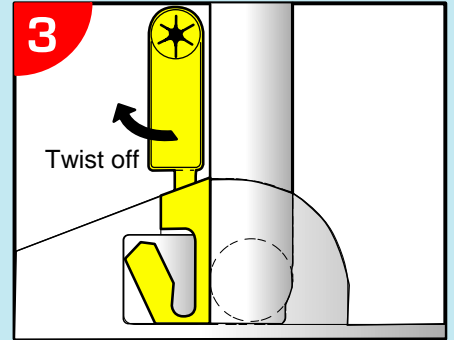
The following instructions apply to the fitting of the T-Loc, T-Eye and T-Knuckle lower terminations.



**1**  
**INSERT THE T-FITTING INTO THE EARTH ANCHOR SOCKET AND TURN TO ENGAGE.**



**2**  
**THE T-FITTING MUST BE SECURED WITH THE T-WEDGE. PUSH THE T-WEDGE INTO THE EARTH ANCHOR SOCKET BEHIND THE T-FITTING AS FAR AS IT WILL GO.**



**3**  
**RAISE THE T-FITTING TO FULLY ENGAGE THE T-WEDGE. THE TAB MAY THEN BE TWISTED OFF.**

