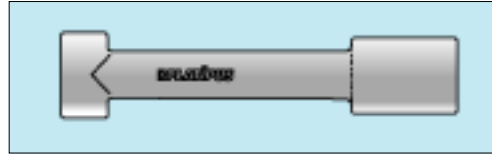
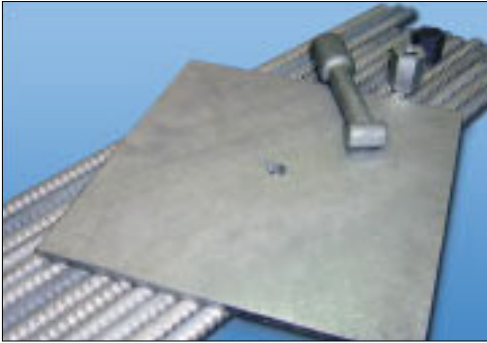


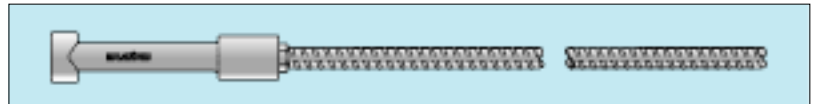
# ROD SYSTEMS



## T-KNUCKLE

This fitting enables rods to be connected to T-Loc specification earth anchors.

The T-Knuckle is available in galvanised steel and stainless steel and can be used with rod sizes up to 25mm diameter. The T-Knuckle is secured in the earth anchor using a T-Wedge. Larger rod sizes can be accommodated with a slight modification to the standard T-Knuckle.



## STEEL RODS

Standard steel rods are available in various sizes up to 25mm in diameter. They are compatible with the galvanised T-Knuckle lower termination and are suitable for temporary short term applications.

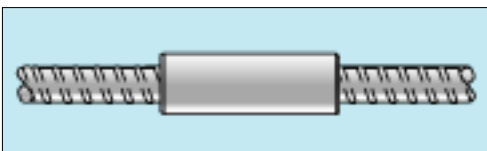
## GALVANISED STEEL RODS

Available in the same sizes as standard steel rods. By hot dip galvanising the rods the system becomes suitable for medium term applications.

## STAINLESS STEEL RODS

Available in the same sizes as standard steel rods. They are compatible with the stainless steel T-Knuckle lower termination and are suitable for long term applications.

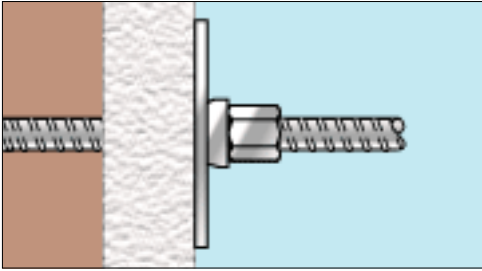
**BY OVERSPECIFYING THE ROD DIAMETERS TO ALLOW FOR SACRIFICIAL CORROSION STEEL RODS MAY BE USED FOR LONG TERM APPLICATIONS.**



## COUPLER

All rods are available in standard 6m lengths. For installations where 6m rods are not able to accommodate or larger lengths are required rod sections can be connected together using a coupler.

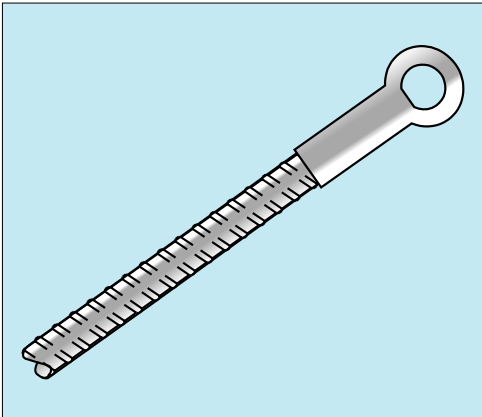
# ROD SYSTEMS



## **LOADPLATE SET**

The loadplate is most commonly used in applications where the angle of installation is perpendicular to the structure.

Available in either galvanised steel or stainless steel. Standard sizes start at 150mm sq. Larger Loadplate sets can be made to order to suit specific customer requirements.



## **THREADED ROD EYE**

The Threaded Rod Eye is a simple fitting used to create an eye at the end of a rod system.

It is available in galvanised steel and is mostly associated with guyed applications.